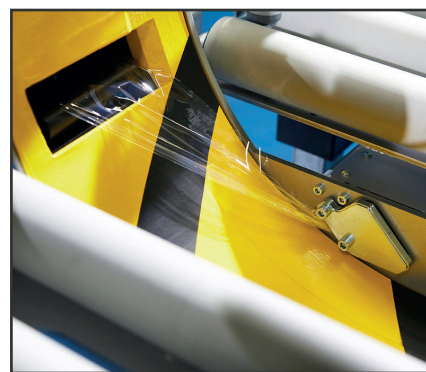


FA900R

This machine enhances efficiency in wrapping processes while offering the advantage of a larger ring diameter. This feature provides increased flexibility in the packing line to wrap larger items, while remaining adaptable for smaller products.



All machines are subject to ongoing improvements. Some accessories displayed on the model above are optional extras.

TECHNICAL DATA SHEET FOR FA900R

Fully automatic machine with auto infeed and film cut

Product Wrapping Sizes:

- Maximum / minimum length : no limit / 500mm.
- Other Sizes : Check with graphic.
- Minimum Sizes : 200 x 200 x 500mm. (L)

Electrical Equipment:

- Power : 230V I.
- Engine : 1.5 Kw
- Manoeuvre : 24V c.c.
- Power consumption : 0,97 Kw
- Ring rotation speed : 5 to 100 rpm.
- Speed inverter : Fuji.
- PLC : Omron.
- Pneumatic pressure : 6 bars.
- Compressed air consumption : 12 liters/cycle.

Machine to work in conjunction to Powered Conveyors

Stretchfilm Specifications:

Omegatech Super Power 330 Spiral Wrapping Film

100mm 170mm

Reorder Code: OWF10

Reorder Code: OWF17

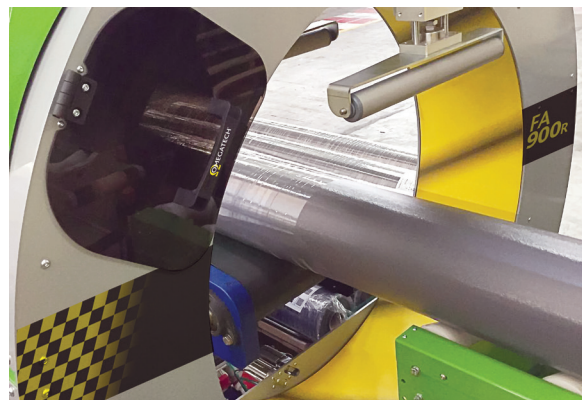
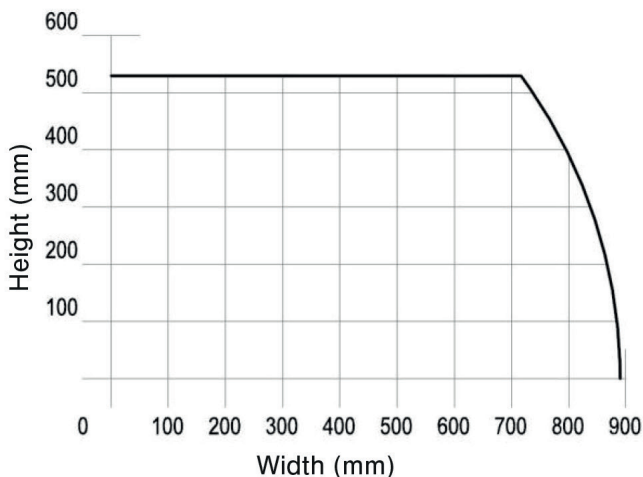
6 Rolls / Box

4 Rolls / Box

Warranty: : 12 Months

Installed machine sizes : Check attached drawing.

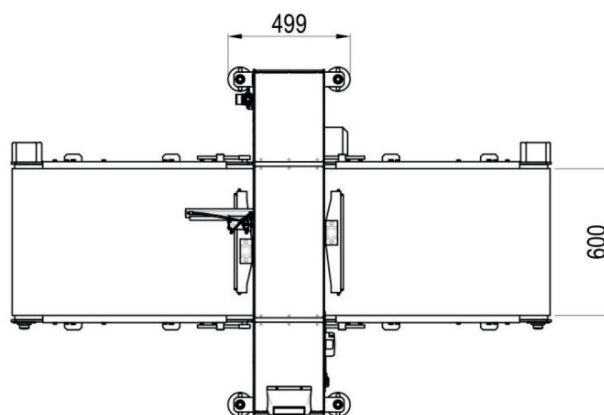
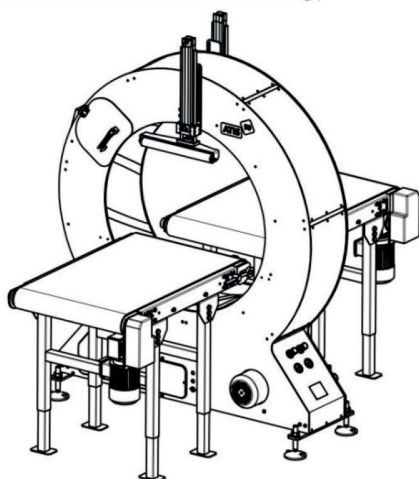
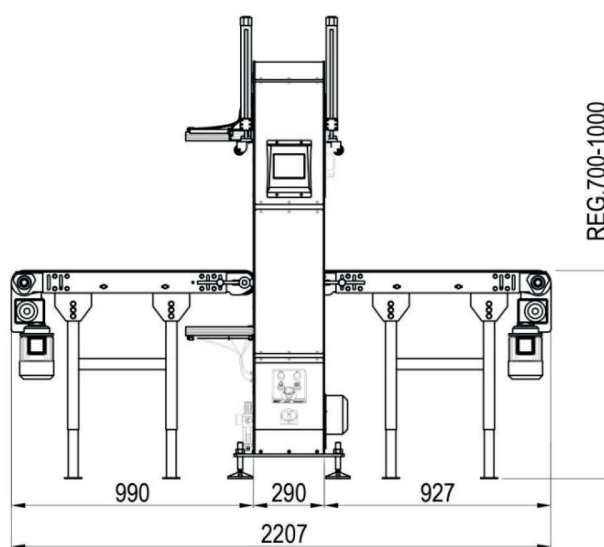
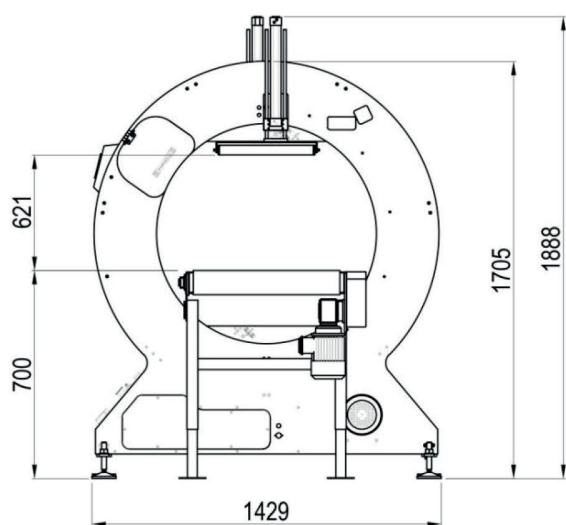
Packed machine sizes : 3,80 x 1,50 x 3,33 m - 1300 Kg.



Technical specifications are subject to change without notice.

TECHNICAL DATA SHEET FOR FA900R

Fully automatic machine with auto infeed and film cut



Drawings are indicative only and may show or omit accessories.